



OREGA

MEETING ROOMS



WWW.OREGA.COM / 0800 977 8000 / sales@orega.com

SPACE
TO BE
YOU.





EVERYTHING YOU NEED FOR A PRODUCTIVE MEETING

Welcome to Orega Meeting Rooms, where style meets productivity. Our state-of-the-art facilities are designed to provide you with everything you need for a successful meeting.

From high-speed internet and video conferencing, to comfortable seating and ample natural light, our meeting rooms are equipped to handle any type of gathering. We also offer a range of catering options to keep you and your guests energised throughout the day.



FLEXIBLE TERMS

Our meeting space is available by the hour, half day or day. Simply book it for as long as you need.



NO BUFFERING

Supercharged connectivity means virtual attendees can be as engaged as the people in the room – no buffering, no dropped calls, just crystal clear audio and video.



ADMIN SUPPORT

Whatever you need to run your meeting we can help, whether that's a warm welcome for your guests or a flip-chart, print-outs or stationery.



FLEXIBLE SPACE

Use it how you choose – as spillover space if your own rooms are booked, for team-building and off-site days, training or board meetings.



TECH SUPPORT

Our friendly, knowledgeable team are on hand to assist with any additional technology requirements you may have – and to ensure you know how to use it.



FOOD & DRINK

Working lunch? Pre-order from a wide selection of food and beverages, sourced from local catering partners so they arrive fresh at a time that suits you.



THE POWER OF FACE-TO-FACE MEETINGS

Collaboration is essential to any successful business, and there's no better way to collaborate than in person. Our meeting rooms provide a space where teams can work together to generate transformational ideas.

We'll help you supercharge your creativity and take your communication to the next level.

BOARD ROOMS

Our Board Rooms offer a stylish and professional setting, perfect for hosting your board meetings, presentations or conferences. Equipped with state-of-the-art technology and facilities, including smart TVs, you'll have everything you need to impress clients and colleagues alike.

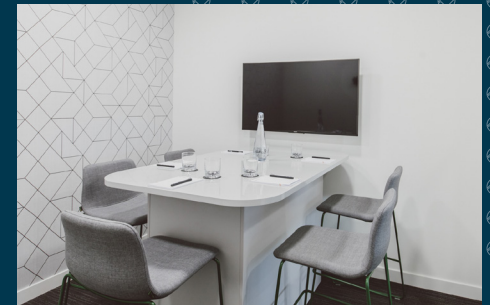


TRAINING ROOMS

Whether you're training new employees or upskilling your team, our training rooms provide everything you need to deliver a successful and productive session.

INTERVIEW ROOMS

When it comes to conducting interviews, creating the right environment is crucial. That's why Orega's interview rooms are designed with privacy and comfort in mind. Our sound-proofed spaces provide a calm and confidential environment where interviewees can relax and feel at ease.



EVERYTHING YOU NEED



Climate control



Quality sound
insulation



Concierge
service



Supercharged
connectivity



State-of-the-art IT



Collaboration
spaces



At Orega, we believe that every meeting is an opportunity to impress. That's why we offer purpose-built meeting rooms equipped with state-of-the-art technology and unparalleled support to help you make the most of every interaction.

TECH-ENABLED

- Make a lasting impression with purpose-built meeting rooms
- State-of-the-art equipment for seamless presentations
- Lightning-fast WiFi to stay connected and productive

INTERACTIVE

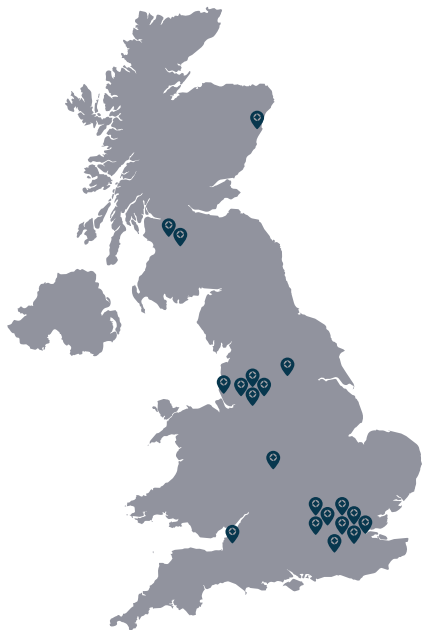
- CleverTouch Smart Screens for interactive presentations
- Connect your devices for seamless integration
- High-quality equipment for clear communication
- Stay productive with fast and reliable WiFi

CONCIERGE SERVICE

- Super-charge your image with unparalleled support and hospitality
- Always-on Concierge team to take care of your every need
- Focus on your business while we handle the rest
- Renowned service levels that leave your guests impressed and ready for business

LOCATIONS

Whether you're looking for small hubs as part of a hybrid working set-up or need one sizeable, flexible space, choosing the right location is essential. Our centrally located offices and meeting rooms are close to transport links, green space, shops, bars and restaurants. Beautiful workspace and a VIP concierge service combine to support employees' wellbeing, so they become more productive, and business thrives.



LONDON

You can find our serviced offices and meeting rooms in easy-to-reach places around London's financial, legal and insurance hotspots at Mark Lane, Old Bailey, Holborn Gate, Gracechurch Street and High Holborn.

Employees are more likely to stay if you offer them contemporary work environments in City, midtown and central locations designed to make them happy and healthy.



MANCHESTER

Choose from five locations in fast-growing Manchester that showcase your brand, retain and attract talent, and boost productivity – saving you recruitment costs and giving growth a free rein.

The Tootal Buildings, Balloon Street, Arkwright House, King Street and Piccadilly Place workspaces are at well-known central Manchester addresses, close to everything the city offers employees and clients.

NORTH

If you're looking to expand in the North, our beautiful, serviced offices and meeting rooms in Leeds and Liverpool provide the perfect springboard.

We designed our workspaces to attract talent, and they'll be a magnet for highly skilled existing employees and the rich stream of university graduates emerging in both cities.

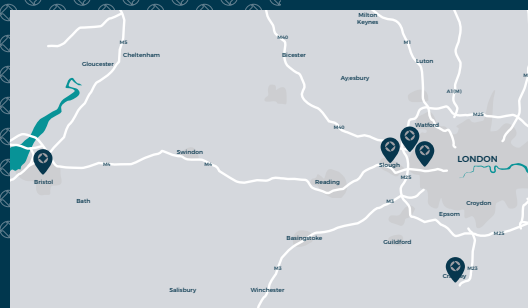
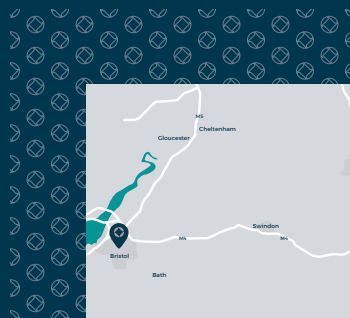
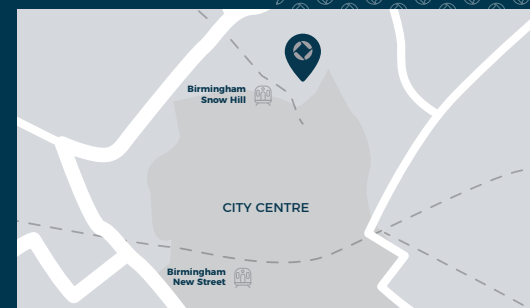




MIDLANDS

The ultra-connected Midlands region is a hotbed for manufacturers and aspiring service sector companies, making our Birmingham workspaces an ideal place for strong brands.

Our workspace in the Colmore Building is the complete opposite to noisy inadequate space that damages brands. Instead, it delivers all your people need to get work done, spurring your business growth.



SOUTH

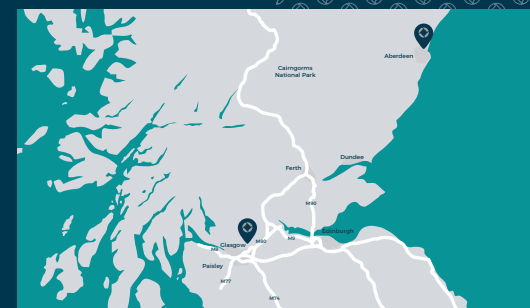
Our six exceptional office spaces in the South – Bristol, Gatwick, Marlow, Slough, Uxbridge and Stockley Park – provide productive environments where your company culture thrives and teams are happy.

Unleash your business and employees' potential in spacious, inspirational workspace while we provide a reliable gold-standard service that helps you focus on work.

SCOTLAND

Choose any of our serviced offices in Scotland – George Square and St Vincent Street in Glasgow or The Capitol Building in Aberdeen – and we'll help your business make a splash.

We designed each one to torpedo boredom, boost inspiration, prompt engagement and push forward your business as productivity improves.



WHAT OUR CLIENTS SAY



“

“Outstanding client care, exceptional office space, immaculately clean, modern with all the current technology, our clients always rave about how amazing our offices are. We’ve occupied Orega serviced offices for over a year, the best decision we made for our company. Gemma and her team really look after us and our clients, we couldn’t be happier”

Mikail Khan

★★★★★

”

“

“The Orega team have been fantastic since day one. The staff are friendly, extremely helpful, nothing is too much for them. The team are committed which you can see day in day out by how they continually provide a great level of service. The facilities are modern, bright, clean and the kitchen facilities are great. The toilets are always clean and come with extras like hairspray and hand cream! Thank you for all you do.”

Rina Chauhan-Platt

★★★★★

”

“

“Don’t compare to other operators! That is quality/service!

A very good serviced office provider, who looked after all the needs of our office. From the move-in, to the move-out (as we are all very sad about. They offer every service you need and have been a great help to the office manager. Confidential waste collection, providing furnitures, secure 24h access and we never had any problems with our post.”

Blue Lefevre

★★★★★

”

“

“Beautiful offices and amazing staff. The reception team is very professional who always go the extra mile. Special thanks to Lucia and Anca for providing excellent service which differentiates Orega from it’s competitors.”

Inga Du Toit

★★★★★

”

“

“Great office space. Staff are super friendly and helpful and the space itself has everything you need. Would definitely recommend.”

Isabel Boulder

★★★★★

”

PRICING

LOCATION	ROOM	CAPACITY	HOURLY	HALF DAY	FULL DAY	Flipchart	Whiteboard	Telephone	Internet	WiFi	AV Equipment
LONDON											
GRACECHURCH STREET 70 Gracechurch Street, London EC3V 0XL	Grey	Up to 4	£55	£220	£385	●	●		●	●	●
	Sky	Up to 6	£60	£240	£420	●	●		●	●	●
	Orange	Up to 8	£100	£300	£600	●	●		●	●	●
	Blue	Up to 8	£15	£370	£685	●	●		●	●	●
	Black	Up to 12	£110	£440	£770	●	●		●	●	●
	Green	Up to 16	£160	£640	£1,120	●	●		●	●	●
HIGH HOLBORN											
16 High Holborn, London WC1V 6BX	Boardroom	Up to 16	£75	£300	£525	●	●	●	●	●	●
HOLBORN GATE											
330 High Holborn, London, WC1V 7QH	Staples	Up to 5	£34	£136	£238	●	●	●	●	●	●
	Barnards	Up to 6	£41	£162	£285	●	●	●	●	●	●
	Lincoln's	Up to 10	£68	£272	£476	●	●	●	●	●	●
	Grays	Up to 12	£82	£324	£570	●	●	●	●	●	●
MARK LANE											
70 Mark Lane, London, EC3R 7NQ	Fenchurch	Up to 8	£90	£355	£620	●	●	●	●	●	●
	Tower	Up to 8	£90	£355	£620	●	●	●	●	●	●
	Exchange	Up to 3	£42	£165	£290	●	●	●	●	●	●
OLD BAILEY											
20 Old Bailey, London EC4M 7AN	McMorran	Up to 4	£45	£135	£270				●	●	
	Whitby	Up to 4	£55	£145	£280				●	●	●
	Mountford	Up to 14	£110	£310	£610				●	●	●
MIDLANDS											
BIRMINGHAM											
The Colmore Building, 20 Colmore Circus Queensway, Birmingham B4 6AT	Sentinel	Up to 6	£50	£160	£300	●	●	●	●	●	●
	Rotunda	Up to 6	£50	£160	£300	●		●	●	●	●
	Cube	Up to 8	£60	£210	£420	●	●	●	●	●	●
	Garrison	Up to 12	£65	£245	£420	●	●	●	●	●	●

Larger groups can be accommodated subject to availability.
Calls and internet charged at standard rate.

PRICING

LOCATION	ROOM	CAPACITY	HOURLY	HALF DAY	FULL DAY	Flipchart	Whiteboard	Telephone	Internet	WiFi	AV Equipment
THAMES VALLEY											
SLOUGH The Switch, 1-7 The Grove, Slough SL1 1QP	Brent	Up to 6	£30	£120	£210	●	●	●	●	●	●
	Canterbury	Up to 14	£40	£160	£280	●	●	●	●	●	●
	Keenan	Up to 18	£45	£180	£315	●	●	●	●	●	●
	Boardroom	Up to 32	£50	£200	£350	●	●	●	●	●	●
MARLOW Marlow International, Parkway, Marlow SL7 1YL	Kerridge	Up to 6	£36	£130	£230	●	●	●	●	●	●
	Evans	Up to 10	£58	£208	£370	●	●	●	●	●	●
	Redgrave	Up to 12	£68	£244	£435	●	●	●	●	●	●
UXBRIDGE Belmont Building, Uxbridge UB8 1HE	The Belmont	Up to 4	£35	£140	£245	●			●	●	
	The Hurricane	Up to 5	£40	£150	£275	●			●	●	
	The Grand Union	Up to 8	£45	£180	£315	●	●	●	●	●	●
	The Brunel	Up to 12	£60	£240	£420	●	●	●	●	●	●
STOCKLEY PARK Stockley Park, 4 Longwalk, Uxbridge UB11 1FE	Flanagan	Up to 5	£45	£180	£315	●			●	●	●
	Nicholson	Up to 6	£40	£160	£280	●			●	●	●
	Branson	Up to 8	£60	£240	£420	●	●		●	●	●
	McMaster	Up to 12	£65	£300	£525	●	●		●	●	●
SOUTH											
GATWICK The Beehive, City Place, Gatwick, West Sussex RH6 0PA	De Havilland	Up to 4	£20	£80	£140	●				●	
	Douglas dc 3	Up to 4	£35	£140	£245	●				●	
	Viscount	Up to 4	£40	£160	£280	●				●	
	Dakota	Up to 10	£60	£240	£420	●		●	●	●	●
	Vanguard	Up to 10	£85	£340	£595	●	●	●	●	●	●

Larger groups can be accommodated subject to availability.
Calls and internet charged at standard rate.

PRICING

LOCATION	ROOM	CAPACITY	HOURLY	HALF DAY	FULL DAY	Flipchart	Whiteboard	Telephone	Internet	WiFi	AV Equipment
BRISTOL											
	COLSTON AVENUE										
	33 Colston Avenue, Bristol, BS1 4UA										
MANCHESTER											
	KING STREET										
	76 King Street, Manchester M2 4NH										
BALLOON STREET											
	1 Balloon Street, Manchester M4 4BE										
ARKWRIGHT HOUSE											
	Parsonage Gardens, Manchester M3 2LF										
PICCADILLY PLACE											
	3 Piccadilly Place, Manchester M1 3BN										
THE TOOTAL BUILDINGS											
	The Tootal Buildings, Broadhurst House, 56 Oxford Street, Manchester, M1 6EU										

Larger groups can be accommodated subject to availability.
Calls and internet charged at standard rate.

* Includes 1 serving of tea/coffee/biscuits and water.
† Includes 2 servings of tea/coffee/biscuits and water.

PRICING

LOCATION	ROOM	CAPACITY	HOURLY	HALF DAY	FULL DAY	Flipchart	Whiteboard	Telephone	Internet	WiFi	AV Equipment
NORTH											
LIVERPOOL 20 Chapel Street, Liverpool L3 9AC	Echo	Up to 6	£34	£135	£265	●	●	●	●	●	
	Tate	Up to 12	£60	£240	£392	●	●	●	●	●	●
	Empire	Up to 12	£60	£240	£392	●	●	●	●	●	●
	Boardroom	Up to 24	£86	£328	£645	●	●	●	●	●	●
LEEDS											
St Paul's House, 23 Park Square South, Leeds LS1 2ND	The Shires Suite	Up to 12	£60	£210	£430	●	●		●	●	●
ABERDEEN											
THE CAPITOL BUILDING 431 Union St, Aberdeen AB11 6DA	Alexander	Up to 8	£60	£200	£350		●	●	●	●	●
GLASGOW											
GEORGE SQUARE 9 George Square, Glasgow, G2 1QQ	Moore	Up to 8	£34	£135	£265			●	●	●	●
	Clyde	Up to 8	£34	£135	£265			●	●	●	●
	Campbell	Up to 12	£60	£240	£392			●	●	●	●
ST VINCENT STREET											
220 St Vincent Street, Glasgow, G2 5SG	The Barings Suite	Up to 14	£60	£240	£392	●	●	●	●	●	●

Larger groups can be accommodated subject to availability.
Calls and internet charged at standard rate.



OREGA

**SPACE
TO BE
YOU.**

**GET IN
TOUCH TODAY**

WWW.OREGA.COM

0800 977 8000

sales@orega.com

Orega HQ
70 Gracechurch St,
London, EC3V 0HR